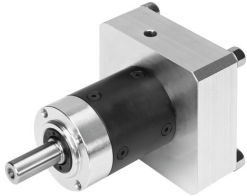


Gearbox EMGC-40-P-G35-SEC-67

Part number: 8000602

FESTO



Data sheet

Feature	Value
Gearbox flange size	40 mm
Motor flange size	67 mm
Torsional backlash	0.67 deg
Type code	EMGC
Gearbox type	Planetary gear
Gear ratio	35:1
Max. actuator speed	6000 1/min
Gearbox operating temperature	-20 °C ... 90 °C
LABS conformity	VDMA24364 zone III
Degree of protection	IP54
Continuous output torque	14 Nm
Mass moment of inertia, gearbox	0.04 kgcm ²
Max. output torque	17.5 Nm
Max. efficiency	92 %
Torsional rigidity	0.85 Nm/arcmin
Product weight	550 g
Interface code, motor out	40G
Interface code, motor in	67A
Note on materials	Contains paint-wetting impairment substances RoHS-compliant